

## OPERATION:

Application:	L.B.P.	Max. Ambient temperature:	43 °C
Refrigerant:	R134a	( 1 ) Max. Steady Discharge temperature:	120 °C
Operation:	Capillary	( 1.2 ) Max. peak Discharge temperature:	135 °C
Cooling:	Static	Max. steady condensing temperature:	60 °C
		( 2 ) Max. peak condensing temperature:	70 °C
		Max. winding temperature	130 °C
		Max. Impurities:	30 mg
		Max. Oil water content:	60 ppm
		Max. compressor water content:	100 mg

## COMPRESSOR:

Displacement:	6.64 cm <sup>3</sup>	Oil type:	Ester
Bore:	22.00 mm	( 4 ) Viscosity	19 cSt
Stroke:	17.48 mm	Suction muffler	Semi – direct
	" A " Shell		
( 3 ) Net weight	9.10 Kg		
Case size	2		
Oil charge	350 cm <sup>3</sup>		

## ELECTRICAL:

Power Supply:	220 – 240 V	Motor Type:	RSIR / RSCR *
Voltage Limits:	187 – 264 V	Locked Rotor Current:	11.92 / 6.46 A **
Frequency:	50 HZ	Main winding Resistance at 25 C:	14.60 Ω
Phase:	1 Ph	Start winding Resistance at 25 C:	19.10 Ω

\* With optional Run capacitor

\*\* Maximum current / Measured current after 4 seconds

( 1 ) Measured 5 cm from the shell with insulated thermocouples

( 2 ) For transient conditions during " Pull Down "

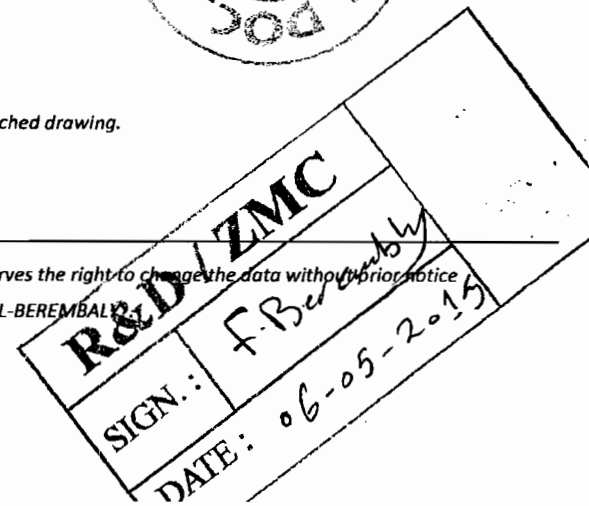
( 3 ) Net weight is with oil but without electrics

( 4 ) Measured at 40 °C

For rated performance , the suction line must be connected to the stub marked " AS " on the attached drawing.

Except for high efficiency compressors, performance data is without a run capacitor

٢٠١٥



## ELECTRICAL COMPONENTS:

ZEM starting device:	PTC- 8100	UH Starting Device:	PTC- 3003-x
ZEM PTC Resistance:	14 Ω	UH PTC Resistance:	14 Ω
Combo PTC	14 Ω	Alt. UH Starting Device:	PTC- 3001-x
RUN Capacitor (Option )	4.0 μF		

## PROTECTORS:

PROTECTORS	Electrica <sup>3</sup> / <sub>4</sub>	Lanxi – China
Type	T 0508 / xx	DRB4- B65-120
Open °C	135	135
Close °C	61	61
U . T . C	1.86	1.86
Time check current	6.5	6.5
Max. current	9.5	9.5
Code (if any)		

3175 for UH protector M3.5 screw

5 for UH protector M3.5 screw

Electrica 'x' Codes: 74 for terminal boards Mod.89,90

24 for UH protector with 6.3mm fast-on

25 for UH protector M3.5 screw

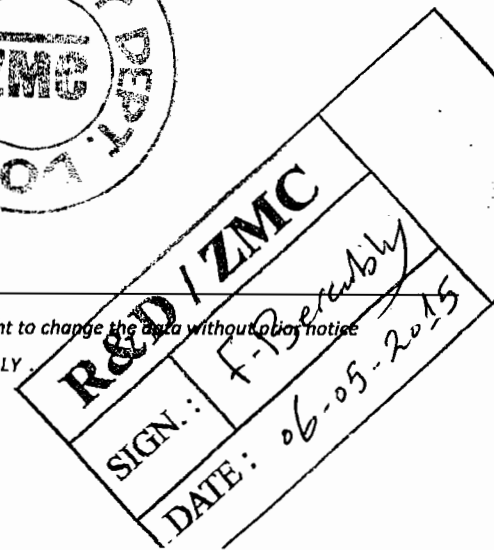
26 for terminal board Mod.91

The combined PTC and protector 'COMBO' is for use with terminal boards Mod.89,90.

4TM protectors are for use with UH terminal boards only.



٢٠١٥ ٦



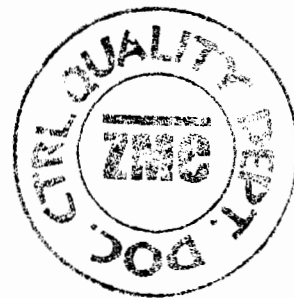
**PERFORMANCE DATA**

TEST CONDITIONS	ASHRAE	CECOMAF
Condensing temperature	55 ° C	55 ° C
Liquid temperature	32 ° C	55 ° C
Gas return temperature	32 ° C	32 ° C
Ambient temperature	32 ° C	32 ° C

**At ASHRAE conditions:**

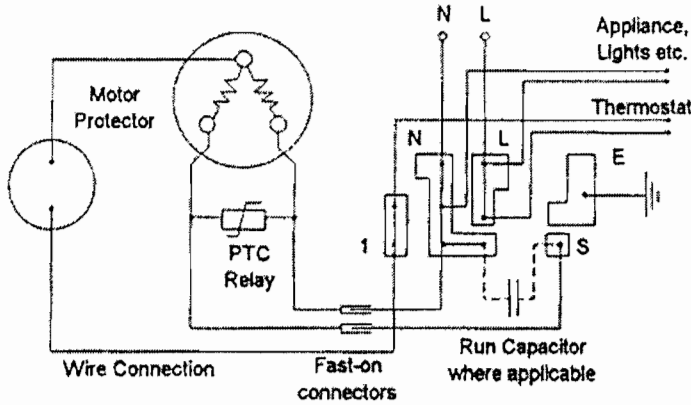
Evaporating temperature (° C)	-30	-25	-23.3	-20	-15	-10
Capacity      Kcal/hr	110	149	158	192	244	307
C.O.P.          W/W	1.01	1.17	1.17	1.33	1.48	1.64
Input power    W	126	147	157	168	191	217
Current         A	0.99	1.05	1.109	1.11	1.19	1.29

٢٠١٥ مايو ٦

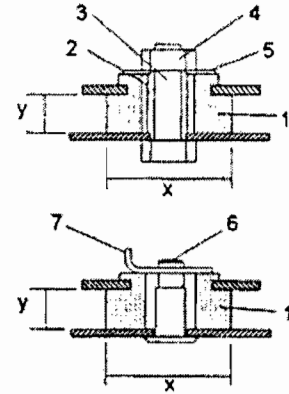


**R&D / ZMC**  
SIGN.: F-De/mbly  
DATE: 06-05-2015

Circuit Diagram for Mod.90 Terminal Board

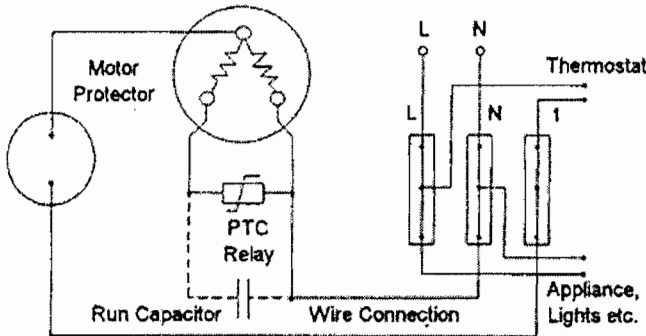


Mounting Accessories

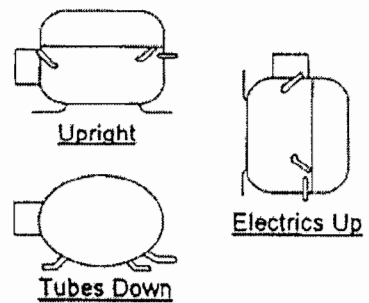


- x = 26mm or 28.5mm
- y = 9mm or 10.3mm
- Other sizes available
- 1. Rubber grommet
- 2. Sleeve
- 3. Hexagon head bolt
- 4. Hexagon nut
- 5. Washer
- 6. Steel pin
- 7. Clip

Circuit Diagram for U.H. Terminal Board



Recommended Transport Positions when fitted into appliances



Compressor Label ('A', 'B' shells only)

